



Firs Avenue, London N11

- Popular Residential Location in N11
- Chain Free Vacant Position
- 5 Bedroom Semi-detached end of Terrace Town House
- Open Plan Living and Dining Area
- Two Bathrooms Plus Guest WC
- One Private Garage and 3 Spaces for Cars
- Private Low-maintenance Rear Garden
- Good Condition Throughout
- EPC rating C (76) and potential to improve to B rating (83)



PROPERTY DESCRIPTION

Situated on one of N11's well-regarded residential streets, this spacious five-bedroom home offers well-balanced accommodation perfectly suited to modern family living. The Living room is enhanced by quality flooring with attractive herringbone-style flooring, recessed lighting, and excellent natural light, ideal for both everyday living and entertaining. A guest WC adds further practicality to the layout. Upstairs, the property offers five generously sized bedrooms, including a comfortable main bedroom, all presented in good condition. Two bathrooms serve the upper floors, providing convenience for larger households. The home is well maintained throughout, allowing a buyer to move straight in while still offering scope for personalisation. To the rear, the private garden has been designed for low maintenance, featuring a paved patio area and artificial lawn, making it ideal for families and outdoor entertaining. A separate garage provides secure parking or additional storage. Conveniently located close to shops, schools, green spaces, and transport links, this is a substantial and attractive family home offered at £825,000.



ROOM DESCRIPTIONS

Ground Floor:

2 Receptions and 1 WC Guest room
Separate Kitchen
Herringbone-style flooring
Recessed lighting and excellent natural lights

First Floor:

2 double bedrooms and one family bathroom.

Second Floor:

2 single bedrooms and one master bedroom with en-suite.

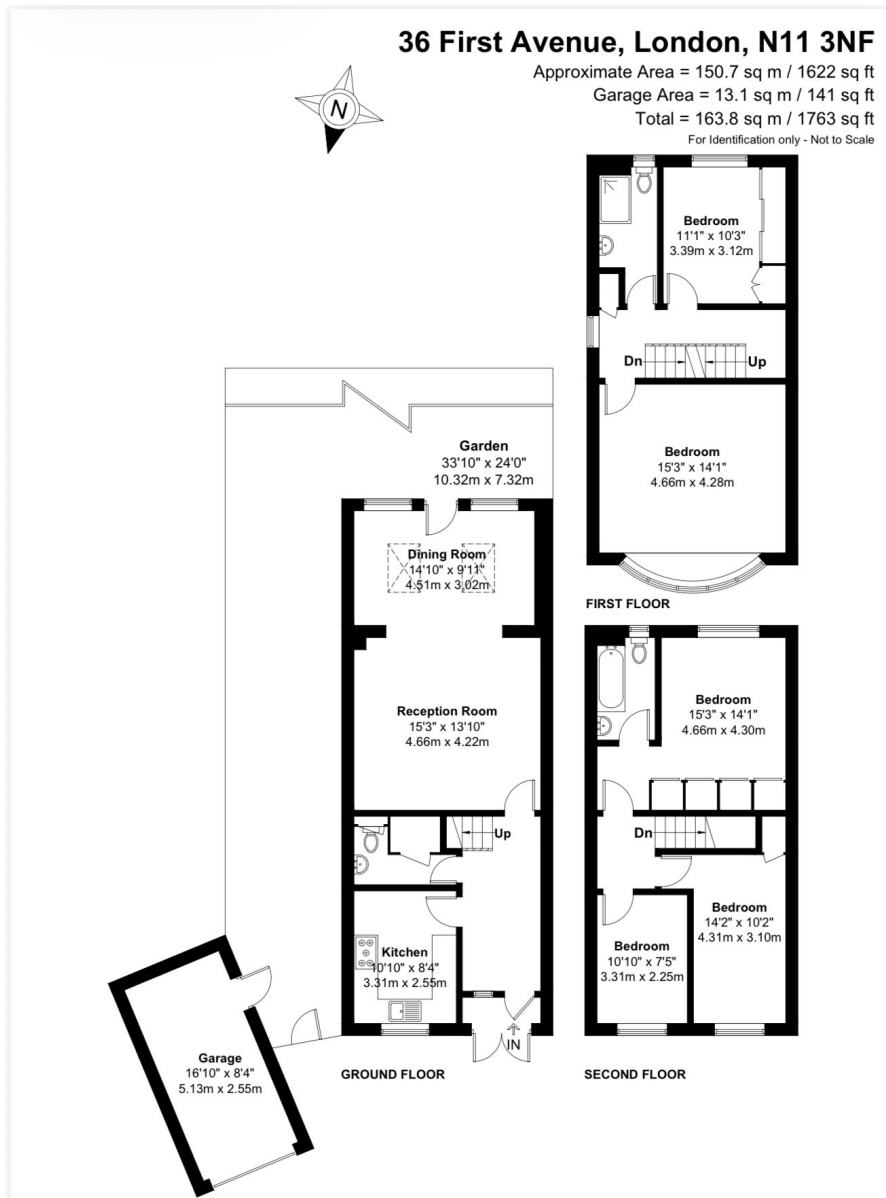
Modern Fitted Kitchen

This contemporary kitchen is finished to a high standard, offering sleek high-gloss cabinetry, quality worktops, and integrated LED plinth lighting for a modern touch. Fully equipped with stainless steel appliances including a range cooker, extractor hood, and fridge freezer, the kitchen is both functional and stylish. Generous storage, tiled flooring, and excellent natural light make this an ideal space for both everyday living and entertaining.

Principle Bedrooms

The two spacious bedrooms including the master bedroom is featuring a king size bed frames and ample space for additional furnishings. Full-height mirrored sliding wardrobes provide excellent storage while enhancing the sense of light and space. Neutral décor, soft carpeting, and recessed ceiling lighting create a calm and comfortable retreat, complemented by large windows dressed with fitted curtains. Other rooms are ideal for guests, family members, or home office use.





Energy Efficiency Rating		Current	Potential
Very energy efficient - lower running costs			
(92+)	A		
(81-91)	B		
(69-80)	C	76	83
(55-68)	D		
(39-54)	E		
(21-38)	F		
(1-20)	G		
Not energy efficient - higher running costs			
England, Scotland & Wales		EU Directive 2002/91/EC	